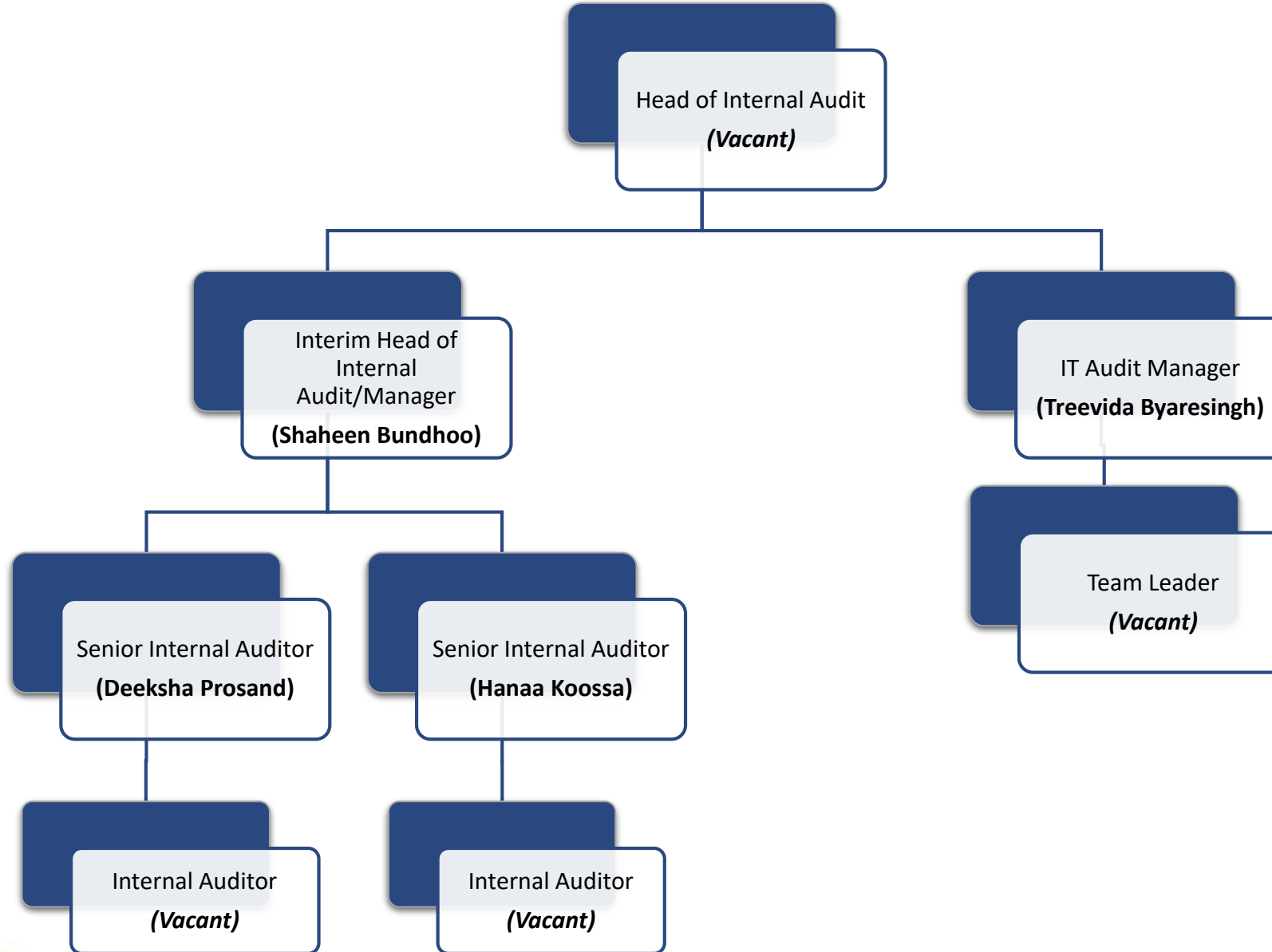


Internal Audit Structure 2023



Key personnel qualifications

Risk Based Unit

The Risk Based Unit currently consists of the Internal Audit Manager along with 2 Senior Internal Auditors.

The Internal Audit Manager holds a BA (Hons) in Law and Management from the University of Mauritius, a Fellow Member of the Association of Chartered Certified Accountants (UK) and is also a member of IIA and MIPA.

IT Audit Unit

The IT Audit Unit consists of the IT Audit Manager who holds a Bsc (Hons) in Finance with Law from the University of Mauritius, is a Certified Information System Auditor (CISA) and is an ISO 27001 Lead Auditor from PECB.